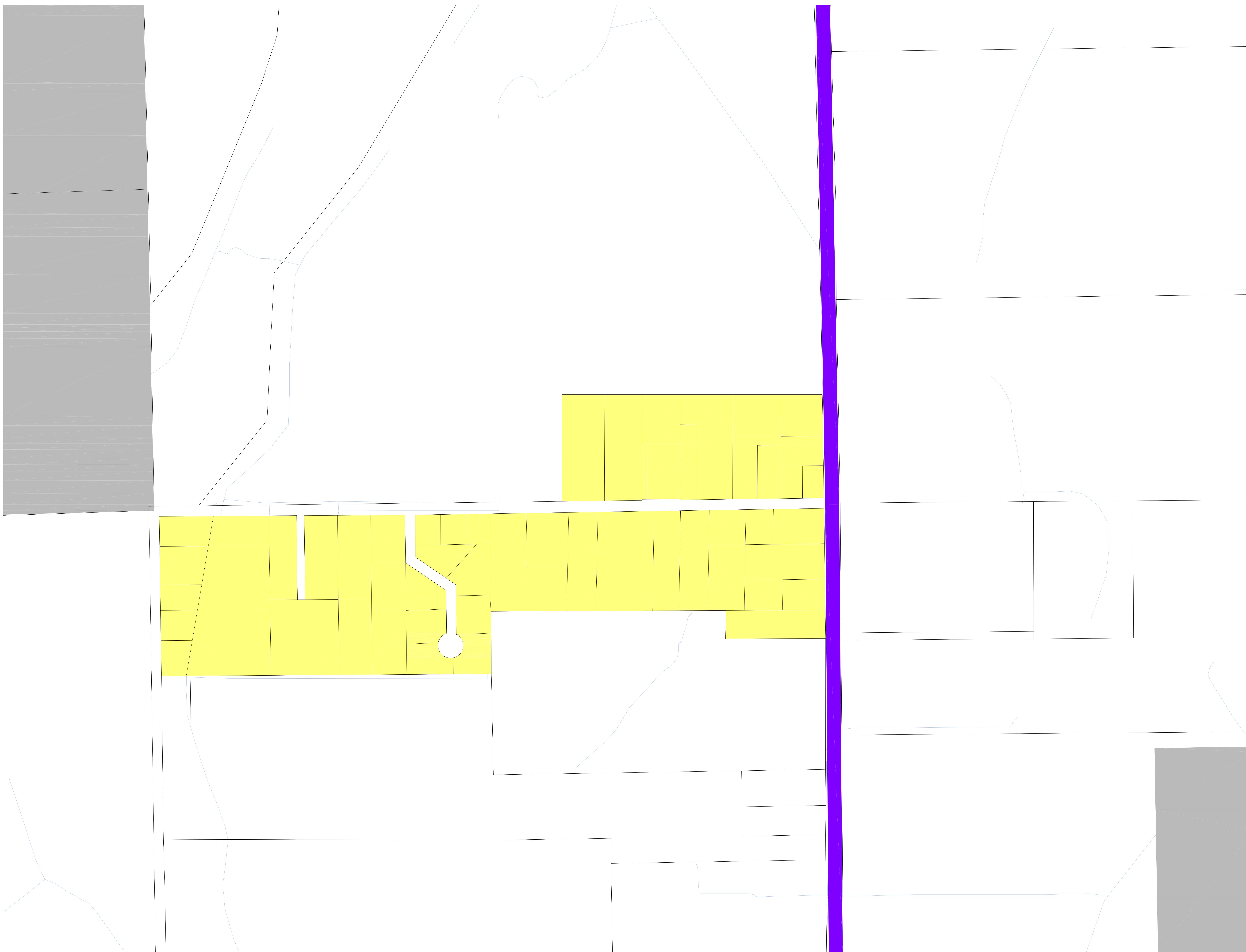



**LAND USE PLAN  
GOLF ROAD**

LEGEND:

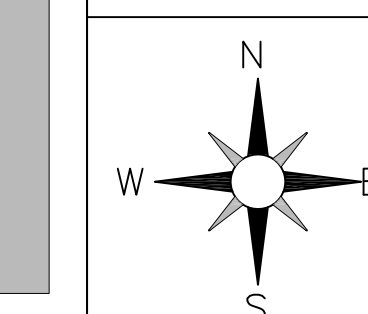
- RESIDENTIAL - RURAL
- AGRICULTURE
- RESOURCE MANAGEMENT
- PROVINCIAL HIGHWAY
- LOT LINES
- RIVER, CREEKS, DITCHES



OFFICIAL COMMUNITY PLAN  
AMENDMENTS:  
None

 7170 CHEAM AVENUE  
P.O. BOX 70  
AGASSIZ, BC CANADA V0M 1A0  
PHONE: (604)796-2235  
FAX: (604)796-5854  
WEBSITE: www.district.kent.bc.ca

DATE: JUL/21/2014	SCALE: AS SHOWN
DRAWN BY: H.L.	CHECKED BY: D.K.



DRAWING NUMBER:  
**Schedule B-4**