

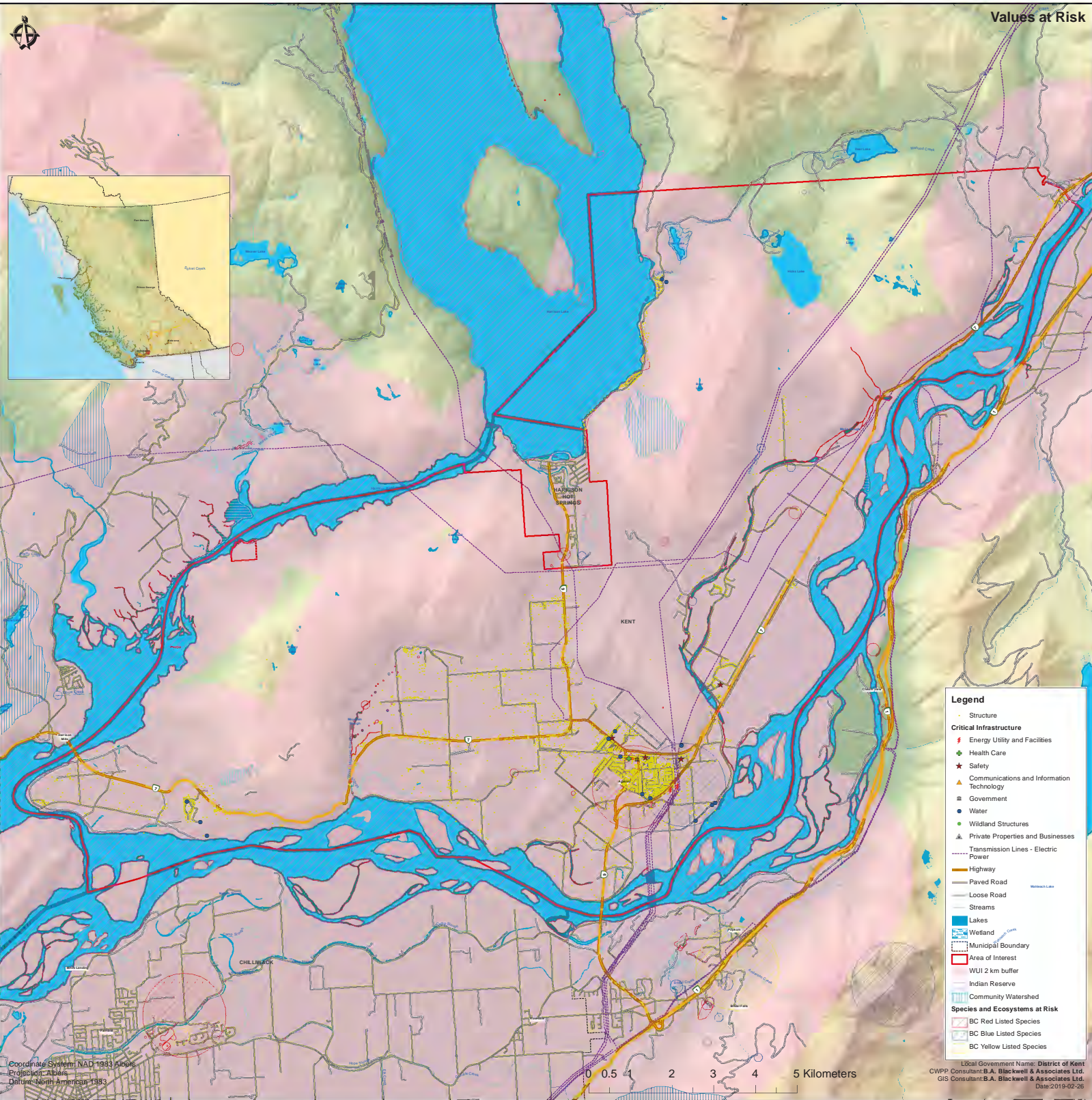
Coordinate System: NAD 1983 Albers  
Projection: Albers  
Datum: North American 1983

0 0.5 1 2 3 4 5 Kilometers

Local Government Name: District of Kent  
CWPP Consultant: B.A. Blackwell & Associates Ltd.  
GIS Consultant: B.A. Blackwell & Associates Ltd.  
Date: 2019-02-26

**Legend**

- Highway
- Paved Road
- Loose Road
- Streams
- Lakes
- Wetland
- Municipal Boundary
- Area of Interest
- Woodlot
- Indian Reserve
- Proposed Treatment
- Ownership**
- Federal
- Crown Agency
- Crown Provincial
- Municipal
- Mixed Ownership
- Private
- Unknown



**Legend**

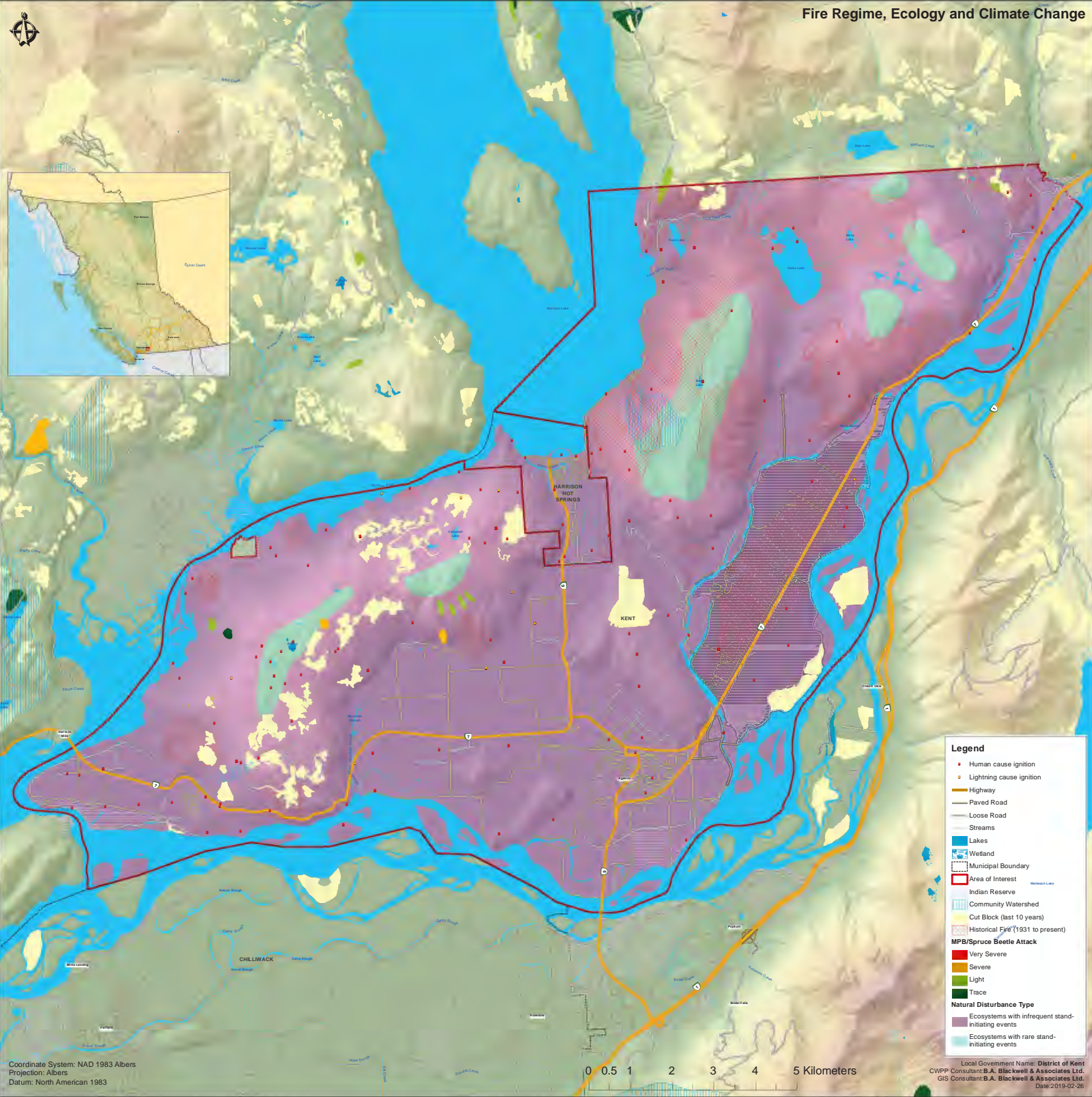
- Structure
- Critical Infrastructure**
  - Energy Utility and Facilities
  - Health Care
  - Safety
  - Communications and Information Technology
  - Government
  - Water
  - Wildland Structures
  - Private Properties and Businesses
- Transmission Lines - Electric
- Power
- Highway
- Paved Road
- Loose Road
- Streams
- Lakes
- Wetland
- Municipal Boundary
- Area of Interest
- WUI 2 km buffer
- Indian Reserve
- Community Watershed
- Species and Ecosystems at Risk**
  - BC Red Listed Species
  - BC Blue Listed Species
  - BC Yellow Listed Species

Coordinate System: NAD 1983 / Albers  
Projection: Albers  
Datum: North American 1983

0 0.5 1 2 3 4 5 Kilometers

Local Government Name: District of Kent  
CWPP Consultant: B.A. Blackwell & Associates Ltd.  
GIS Consultant: B.A. Blackwell & Associates Ltd.  
Date: 2019-02-26

# Fire Regime, Ecology and Climate Change



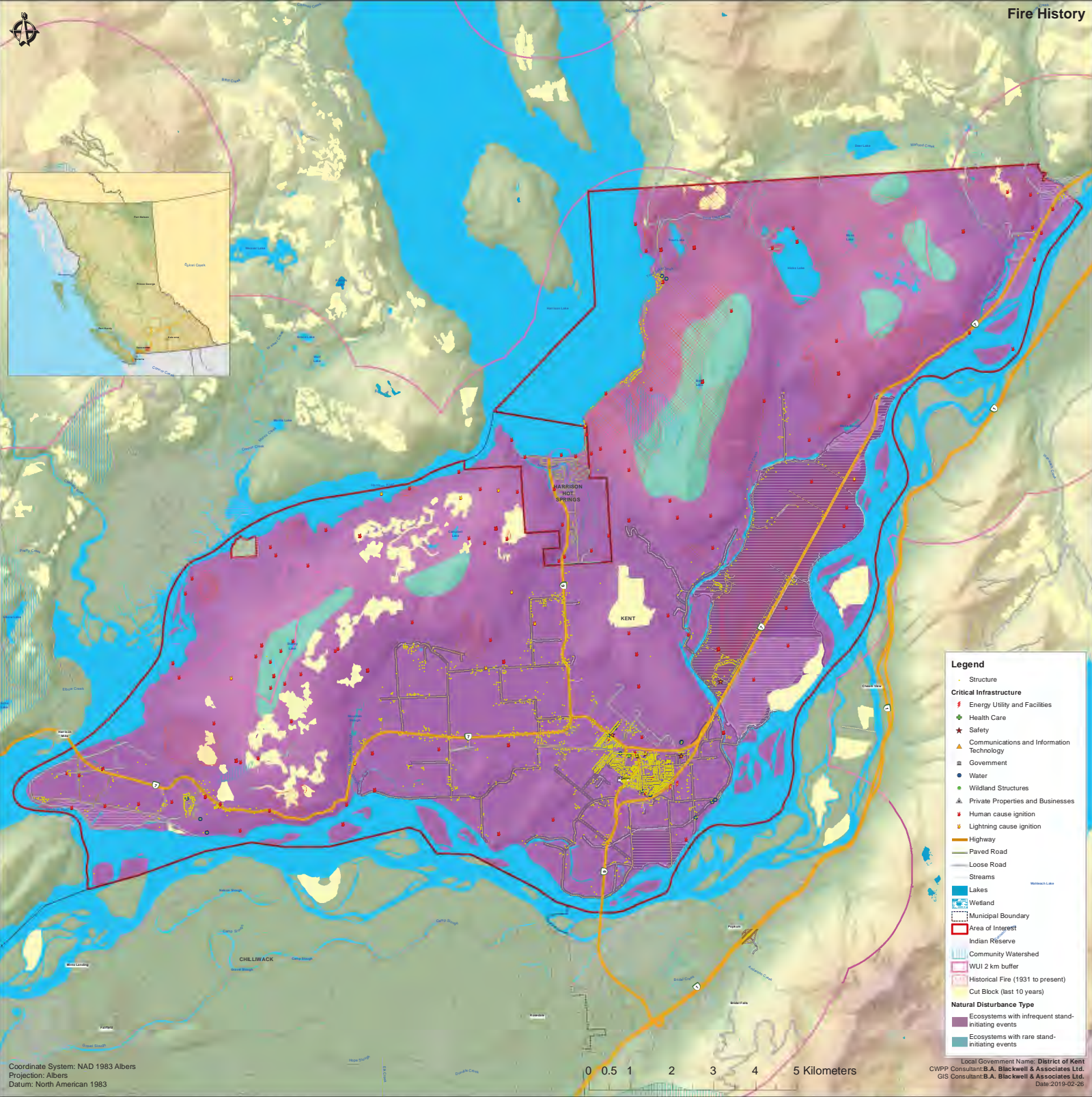
**Legend**

- Human cause ignition
- Lightning cause ignition
- Highway
- Paved Road
- Loose Road
- Streams
- Lakes
- Wetland
- Municipal Boundary
- Area of Interest
- Indian Reserve
- Community Watershed
- Cut Block (last 10 years)
- Historical Fire (1931 to present)
- MPB/Spruce Beetle Attack
  - Very Severe
  - Severe
  - Light
  - Trace
- Natural Disturbance Type
  - Ecosystems with infrequent stand-initiating events
  - Ecosystems with rare stand-initiating events

Coordinate System: NAD 1983 Albers  
Projection: Albers  
Datum: North American 1983

0 0.5 1 2 3 4 5 Kilometers

Local Government Name: District of Kent  
CWPP Consultant: B.A. Blackwell & Associates Ltd.  
GIS Consultant: B.A. Blackwell & Associates Ltd.  
Date: 2019-02-26



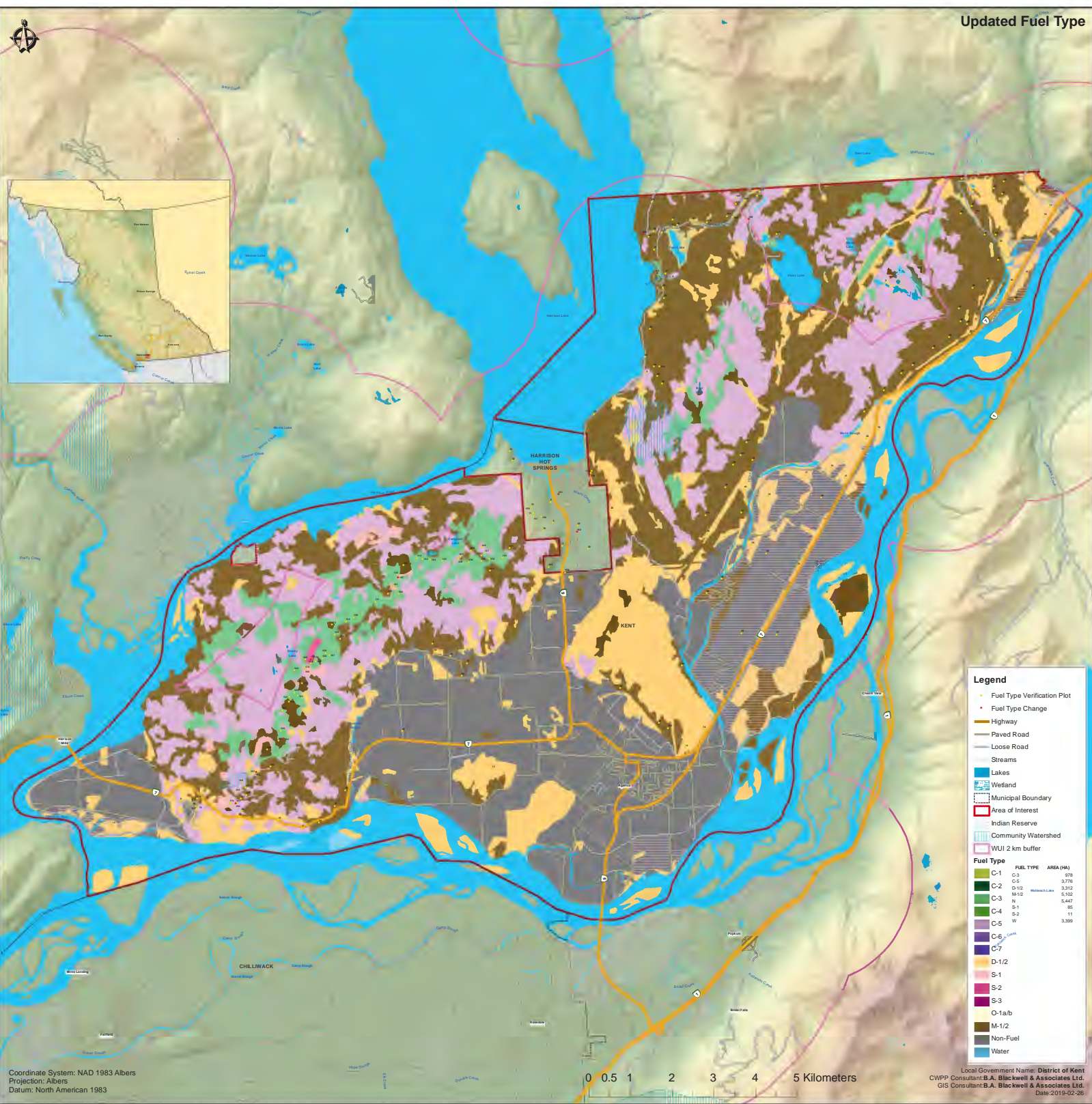
- Legend**
- Structure
  - Critical Infrastructure**
    - Energy Utility and Facilities
    - Health Care
    - Safety
    - Communications and Information Technology
    - Government
    - Water
    - Wildland Structures
    - Private Properties and Businesses
    - Human cause ignition
    - Lightning cause ignition
  - Highway
  - Paved Road
  - Loose Road
  - Streams
  - Lakes
  - Wetland
  - Municipal Boundary
  - Area of Interest
  - Indian Reserve
  - Community Watershed
  - WUI 2 km buffer
  - Historical Fire (1931 to present)
  - Cut Block (last 10 years)
  - Natural Disturbance Type**
    - Ecosystems with infrequent stand-initiating events
    - Ecosystems with rare stand-initiating events

Coordinate System: NAD 1983 Albers  
Projection: Albers  
Datum: North American 1983

0 0.5 1 2 3 4 5 Kilometers

Local Government Name: District of Kent  
CWPP Consultant: B.A. Blackwell & Associates Ltd.  
GIS Consultant: B.A. Blackwell & Associates Ltd.  
Date: 2019-02-26

Updated Fuel Type



**Legend**

- Fuel Type Verification Plot
- Fuel Type Change
- Highway
- Paved Road
- Loose Road
- Streams
- Lakes
- Wetland
- Municipal Boundary
- Area of Interest
- Indian Reserve
- Community Watershed
- WUI 2 km buffer

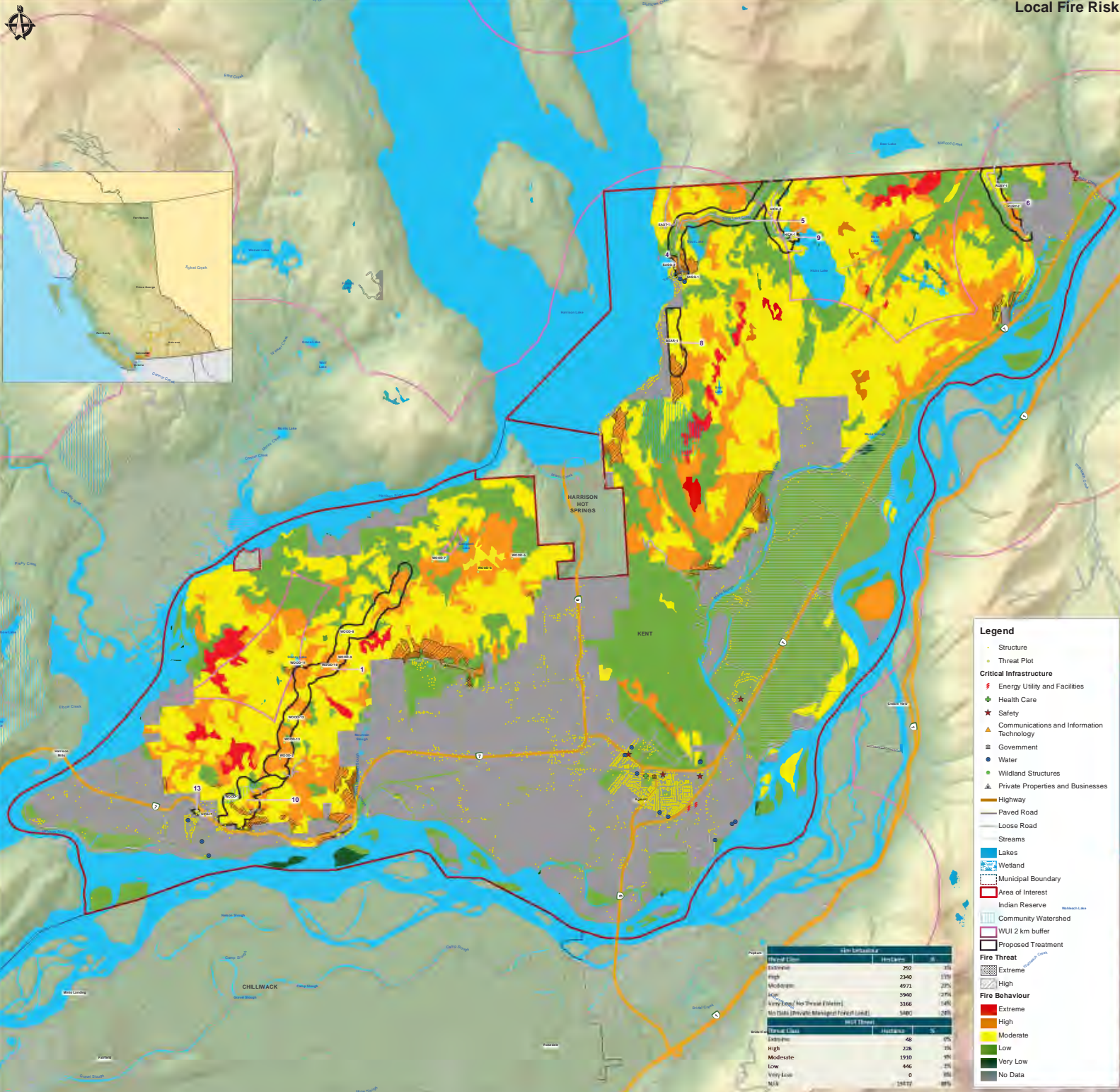
Fuel Type	FUEL TYPE	AREA (HA)
C-1	C-1	976
C-2	C-2	3,776
C-3	C-3	3,312
M-1/2	M-1/2	5,102
N	N	5,447
C-4	S-1	85
C-5	S-2	11
C-6	W	3,359
C-7		
D-1/2		
S-1		
S-2		
S-3		
O-1a/b		
M-1/2		
Non-Fuel		
Water		

Coordinate System: NAD 1983 Albers  
 Projection: Albers  
 Datum: North American 1983

0 0.5 1 2 3 4 5 Kilometers

Local Government Name: District of Kent  
 CWPP Consultant: B.A. Blackwell & Associates Ltd.  
 GIS Consultant: B.A. Blackwell & Associates Ltd.  
 Date: 2019-02-26

# Local Fire Risk



**Legend**

- Structure
- Threat Plot
- Critical Infrastructure**
  - Energy Utility and Facilities
  - Health Care
  - Safety
  - Communications and Information Technology
  - Government
  - Water
  - Wildland Structures
  - Private Properties and Businesses
- Highway
- Paved Road
- Loose Road
- Streams
- Lakes
- Wetland
- Municipal Boundary
- Area of Interest
- Indian Reserve
- Community Watershed
- WUI 2 km buffer
- Proposed Treatment
- Fire Threat**
  - Extreme
  - High
- Fire Behaviour**
  - Extreme
  - High
  - Moderate
  - Low
  - Very Low
  - No Data

Fire Threat	Area (km <sup>2</sup> )	Count	%
Extreme	252	4%	
High	2340	33%	
Moderate	4971	70%	
Low	5940	84%	
Very Low	1566	22%	
No Data (through Municipal Project Load)	5482	78%	

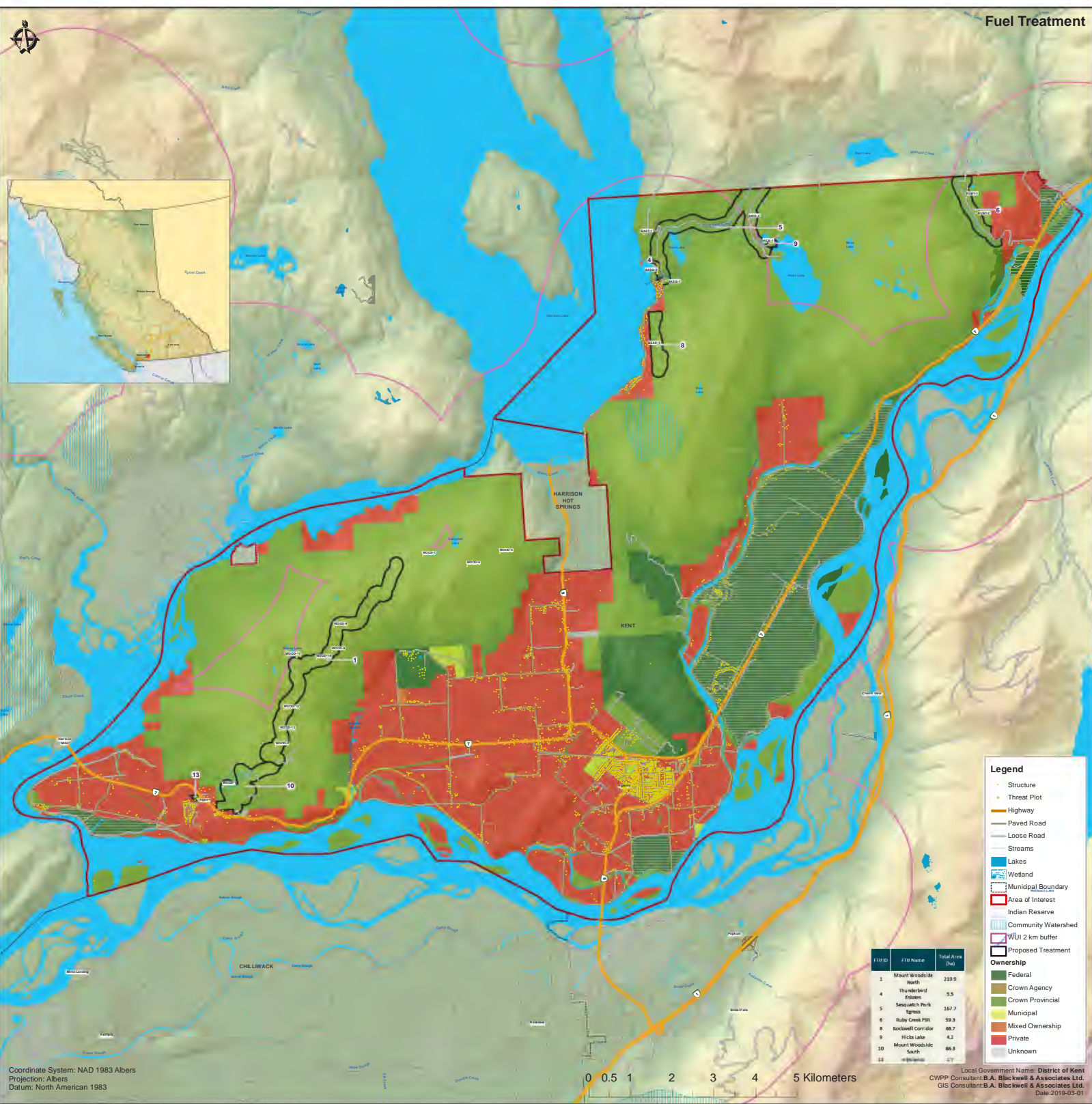
  

Threat Class	Count	%
Extreme	48	0%
High	228	3%
Moderate	1910	27%
Low	446	6%
Very Low	0	0%
No Data	15472	88%

Coordinate System: NAD 1983 Albers  
 Projection: Albers  
 Datum: North American 1983

0 0.5 1 2 3 4 5 Kilometers

Local Government Name: District of Kent  
 CWPP Consultant: B.A. Blackwell & Associates Ltd.  
 GIS Consultant: B.A. Blackwell & Associates Ltd.  
 Date: 2019-03-01



**Legend**

- Structure
  - Threat Plot
  - Highway
  - Paved Road
  - Loose Road
  - Streams
  - Lakes
  - Wetland
  - Municipal Boundary
  - Area of Interest
  - Indian Reserve
  - Community Watershed
  - WUI 2 km buffer
  - Proposed Treatment
- Ownership**
- Federal
  - Crown Agency
  - Crown Provincial
  - Municipal
  - Mixed Ownership
  - Private
  - Unknown

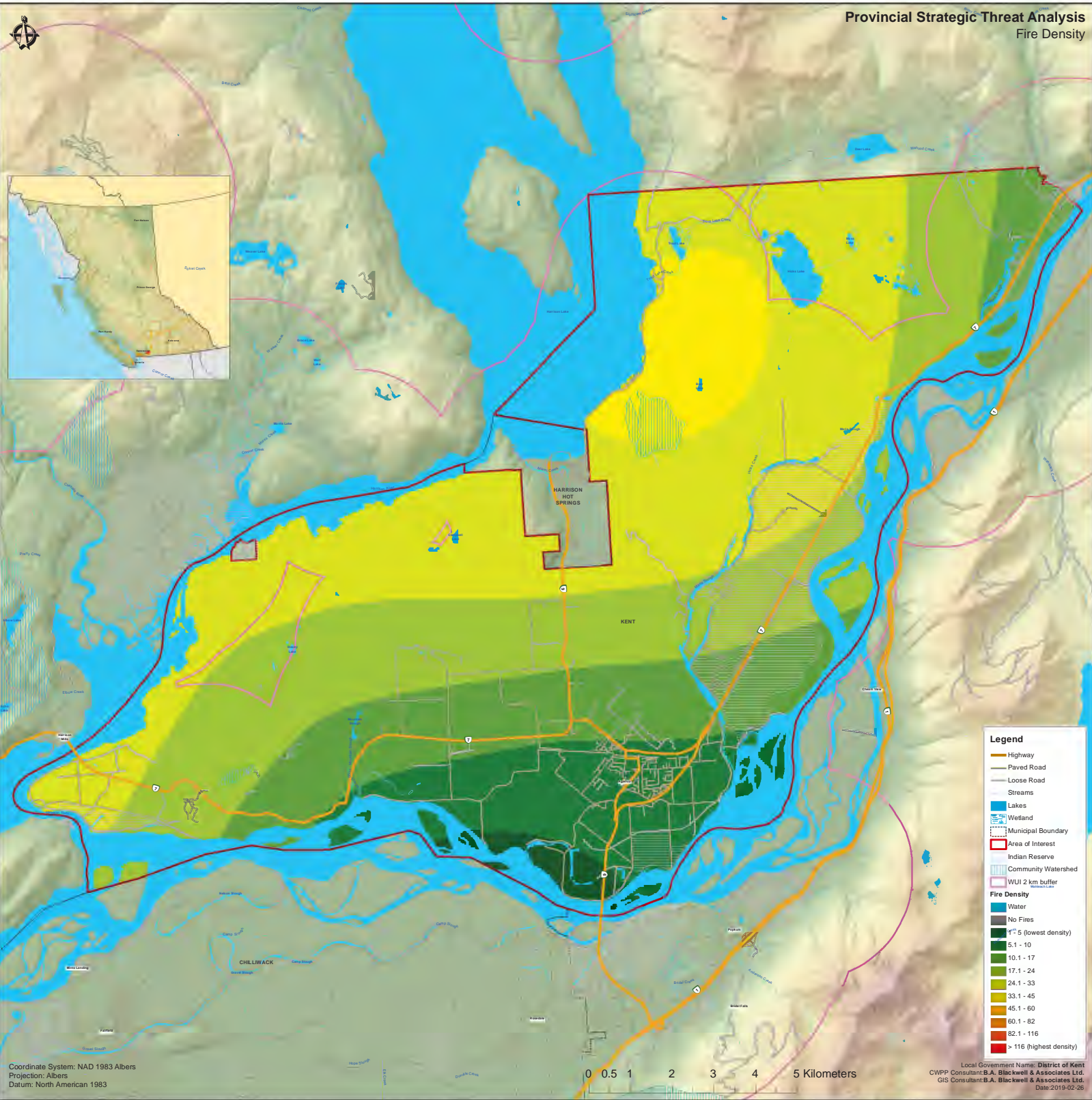
FTT ID	FTT Name	Total Area (ha)
1	Mount Woodside North	219.9
4	Thunderbird Pasture	9.5
5	Sasquatch Park Egress	167.7
6	Ruby Creek PSR	59.9
8	Rockwell Corridor	46.7
9	Wicks Lake	4.2
10	Mount Woodside South	96.3
12	Wetland	12.7

Coordinate System: NAD 1983 Albers  
 Projection: Albers  
 Datum: North American 1983

0 0.5 1 2 3 4 5 Kilometers

Local Government Name: District of Kent  
 CWPP Consultant: B.A. Blackwell & Associates Ltd.  
 GIS Consultant: B.A. Blackwell & Associates Ltd.  
 Date: 2019-03-01

**Provincial Strategic Threat Analysis**  
Fire Density



**Legend**

- Highway
- Paved Road
- Loose Road
- Streams
- Lakes
- Wetland
- Municipal Boundary
- Area of Interest
- Indian Reserve
- Community Watershed
- WUI 2 km buffer

**Fire Density**

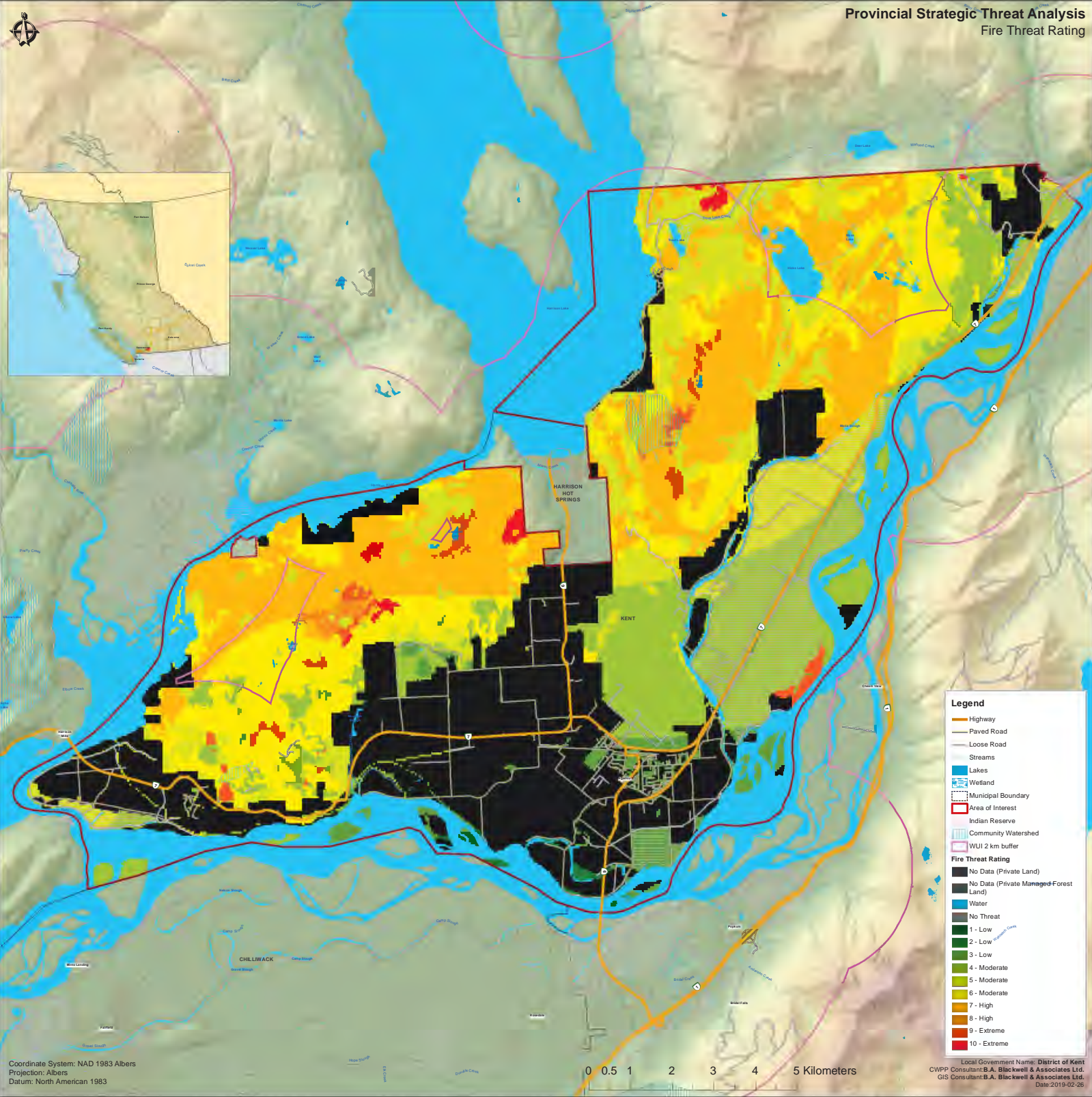
- Water
- No Fires
- 1 - 5 (lowest density)
- 5.1 - 10
- 10.1 - 17
- 17.1 - 24
- 24.1 - 33
- 33.1 - 45
- 45.1 - 60
- 60.1 - 82
- 82.1 - 116
- > 116 (highest density)

Coordinate System: NAD 1983 Albers  
Projection: Albers  
Datum: North American 1983

0 0.5 1 2 3 4 5 Kilometers

Local Government Name: District of Kent  
CWPP Consultant: B.A. Blackwell & Associates Ltd.  
GIS Consultant: B.A. Blackwell & Associates Ltd.  
Date: 2019-02-26

Provincial Strategic Threat Analysis  
Fire Threat Rating



**Legend**

- Highway
- Paved Road
- Loose Road
- Streams
- Lakes
- Wetland
- Municipal Boundary
- Area of Interest
- Indian Reserve
- Community Watershed
- WUI 2 km buffer

**Fire Threat Rating**

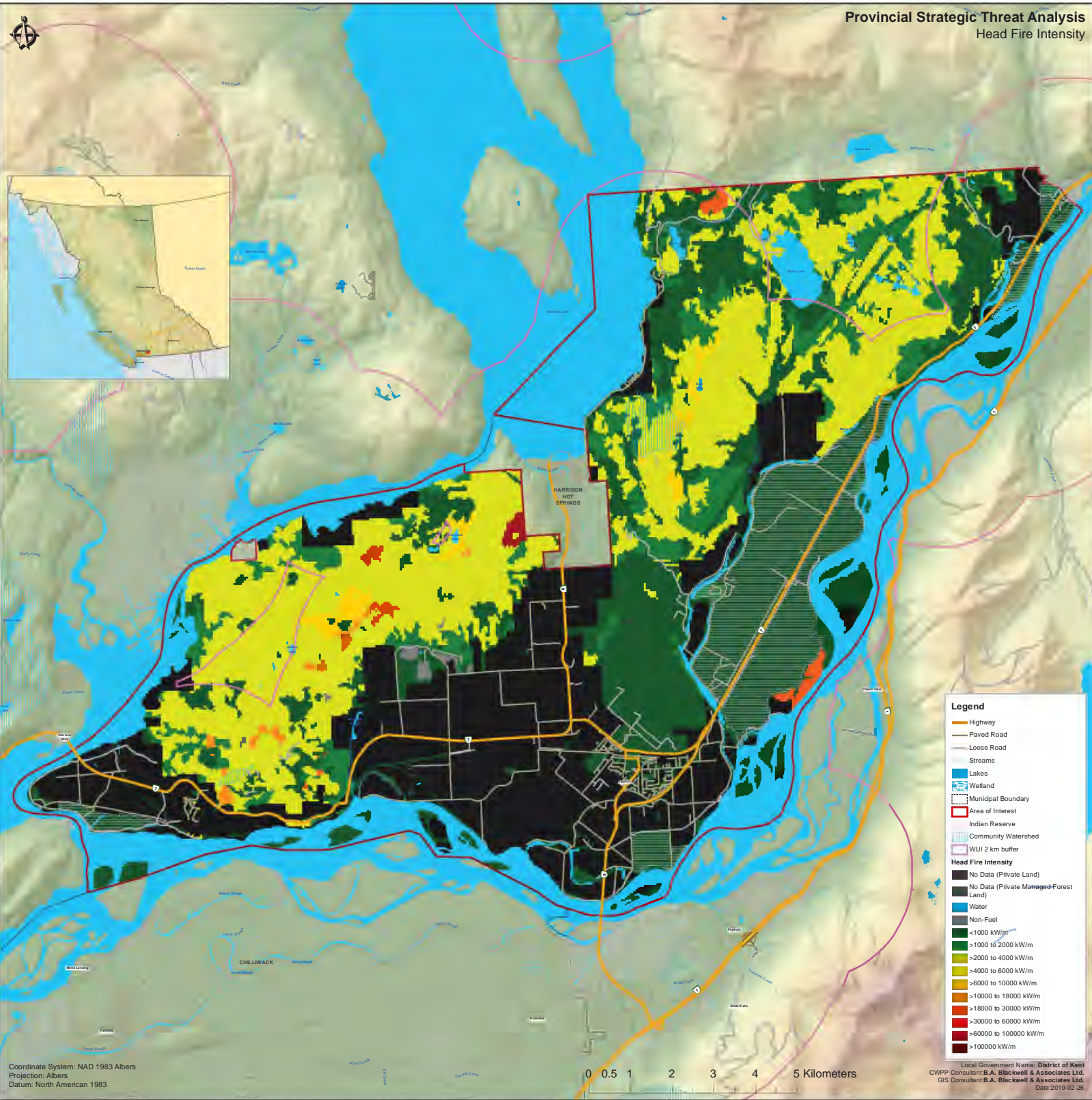
- No Data (Private Land)
- No Data (Private Managed Forest Land)
- Water
- No Threat
- 1 - Low
- 2 - Low
- 3 - Low
- 4 - Moderate
- 5 - Moderate
- 6 - Moderate
- 7 - High
- 8 - High
- 9 - Extreme
- 10 - Extreme

Coordinate System: NAD 1983 Albers  
Projection: Albers  
Datum: North American 1983

0 0.5 1 2 3 4 5 Kilometers

Local Government Name: District of Kent  
CWPP Consultant: B.A. Blackwell & Associates Ltd.  
GIS Consultant: B.A. Blackwell & Associates Ltd.  
Date: 2019-02-26

Provincial Strategic Threat Analysis  
Head Fire Intensity



**Legend**

- Highway
- Paved Road
- Loose Road
- Streams
- Lakes
- Wetland
- Municipal Boundary
- Area of Interest
- Indian Reserve
- Community Watershed
- WUI 2 km buffer

**Head Fire Intensity**

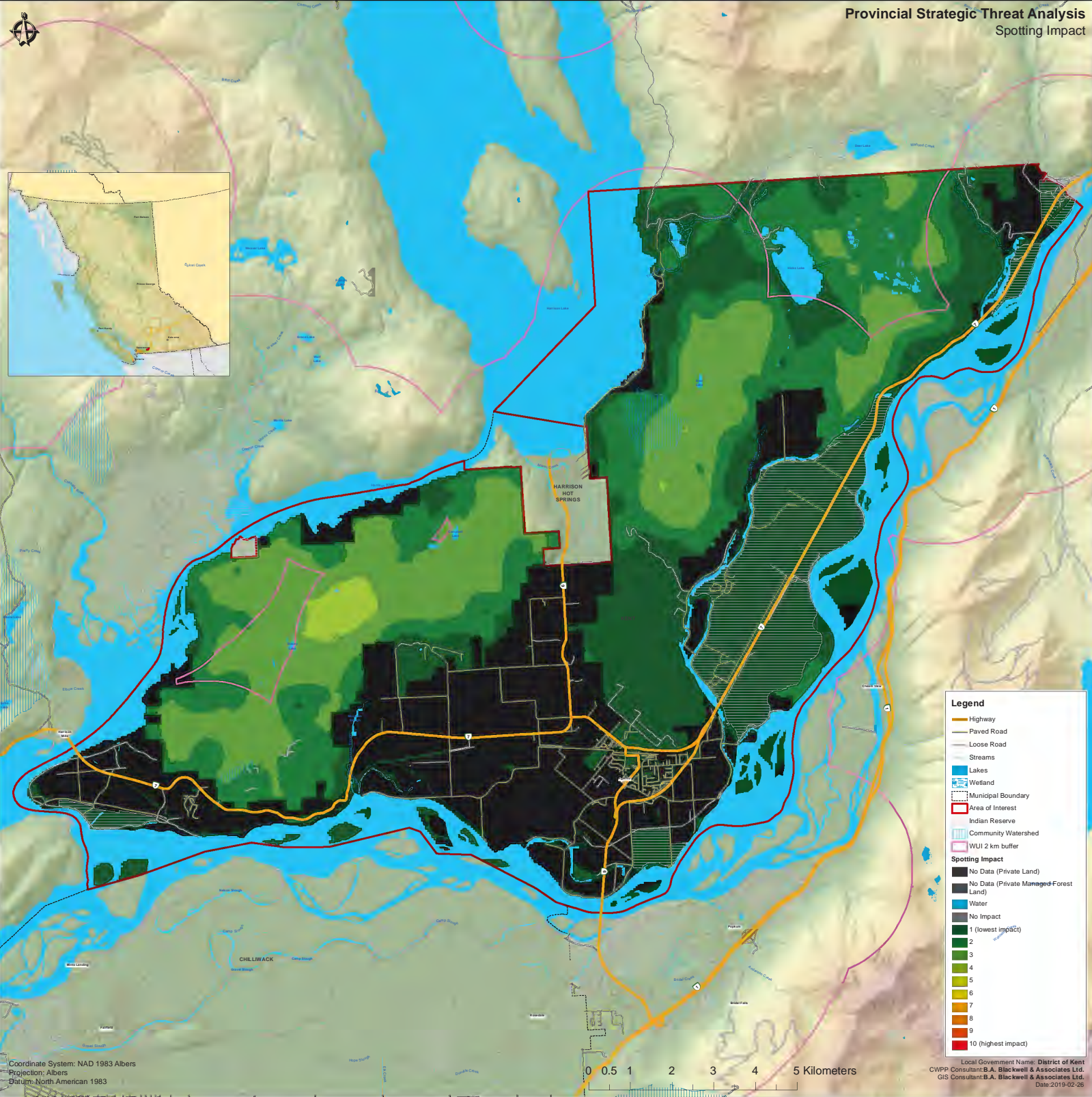
- No Data (Private Land)
- No Data (Private Managed Forest Land)
- Water
- Non-Fuel
- <1000 kW/m<sup>2</sup>
- >1000 to 2000 kW/m<sup>2</sup>
- >2000 to 4000 kW/m<sup>2</sup>
- >4000 to 6000 kW/m<sup>2</sup>
- >6000 to 10000 kW/m<sup>2</sup>
- >10000 to 18000 kW/m<sup>2</sup>
- >18000 to 30000 kW/m<sup>2</sup>
- >30000 to 60000 kW/m<sup>2</sup>
- >60000 to 100000 kW/m<sup>2</sup>
- >100000 kW/m<sup>2</sup>

Coordinate System: NAD 1983 Albers  
Projection: Albers  
Datum: North American 1983

0 0.5 1 2 3 4 5 Kilometers

Local Government Name: District of Kent  
CWPP Consultant: B.A. Blackwell & Associates Ltd.  
GIS Consultant: B.A. Blackwell & Associates Ltd.  
Date: 2019-02-26

Provincial Strategic Threat Analysis  
Spotting Impact



**Legend**

- Highway
- Paved Road
- Loose Road
- Streams
- Lakes
- Wetland
- Municipal Boundary
- Area of Interest
- Indian Reserve
- Community Watershed
- WUI 2 km buffer

**Spotting Impact**

- No Data (Private Land)
- No Data (Private Managed Forest Land)
- Water
- No Impact
- 1 (lowest impact)
- 2
- 3
- 4
- 5
- 6
- 7
- 8
- 9
- 10 (highest impact)

Coordinate System: NAD 1983 Albers  
Projection: Albers  
Datum: North American 1983

0 0.5 1 2 3 4 5 Kilometers

Local Government Name: District of Kent  
CWPP Consultant: B.A. Blackwell & Associates Ltd.  
GIS Consultant: B.A. Blackwell & Associates Ltd.  
Date: 2019-02-26