

ACTIVE TRANSPORTATION NETWORK PLAN

Council Presentation
February 26, 2024

DISTRICT OF KENT



WHAT IS THE ACTIVE TRANSPORTATION PLAN

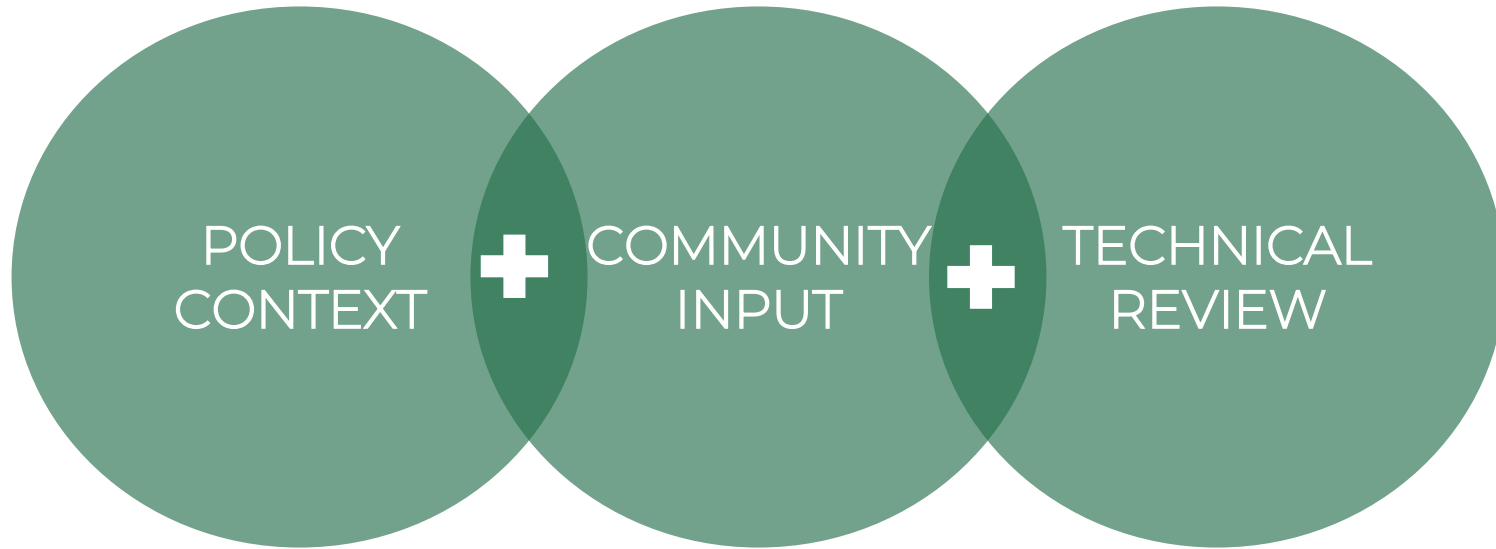
- A long-term vision and plan for active transportation in Kent
- Identify an active transportation network plan including infrastructure projects
- Identify policy, programs, and initiatives to encourage more active transportation
- Priorities for implementation and costs



PROJECT PROCESS



HOW THE PLAN WAS DEVELOPED



COMMUNITY INPUT

- Community Survey #1 – 240 responses (Nov 20 – Dec 16)
- Community Survey #2 – 19 responses (May 8 – June 9)
- Pop-up events to raise awareness – 80+ interactions (Dec 6 and Dec 10)
- Open house – 4 attendees (May 18)
 - Information boards were displayed at District Hall (May 23 – June 30)
- Raising awareness (website, social media, emails to community partners)



TRAVEL PATTERNS

WALK

1. Exercise
2. Enjoy nature, parks, or trails
3. Access shops, restaurants or services
4. Walk my dog(s)

TOP REASONS PEOPLE WALK AND BICYCLE

BICYCLE

1. Exercise
2. Enjoy nature, parks or trails
3. Have fun
4. Spend time with family and friends



BARRIERS

WALK

1. Lack of trails
2. Vehicles not yielding or stopping at designated crosswalks
3. Lack of sidewalks
4. Cars and trucks drive too fast

TOP BARRIERS FOR WALKING AND BICYCLING

BICYCLE

1. Lack of designated bicycle lanes and bicycle routes
2. Cars and trucks drive too fast
3. Lack of trails
4. Poor condition of roadways or pathways



PLANNING PRINCIPLES



Reconciliation

Collaboration through continued conversations, art, tourism, and active transportation connections



Age-friendly

Support independent mobility for people of all ages



Equity

Provide safe, accessible, and affordable access for people of all backgrounds and identities



Cost effective

Provide cost effective solutions to implement strategies, actions, and projects identified



Implementable

Develop a realistic and implementable plan that can be achieved through phases and cost share opportunities

KEY THEMES

CONNECTED
COMMUNITY



ENJOYABLE
EXPERIENCE



EVERYDAY
ENCOURAGEMENT



PLAN THEMES

CONNECTED
COMMUNITY

4 Strategies

10 Actions

ENJOYABLE
EXPERIENCE

3 Strategies

9 Actions

EVERYDAY
ENCOURAGEMENT

4 Strategies

10 Actions

CONNECTED COMMUNITY : STRATEGIES

THEME



Connected Community

STRATEGIES

- 1 Expand and Enhance the Sidewalk Network
- 2 Expand and Enhance Multi-use Pathways, Trails, and Other Cycling Routes
- 3 Improve Safety and Accessibility at Intersections and Crossings
- 4 Improve Integration of Active Transportation with Transit, Other Modes, and District Projects



CONNECTED COMMUNITY



Rural Active Transportation Route



Protected Bicycle Lane



Trail



Sidewalks



Upgrade Existing MoTI Facility

ENJOYABLE EXPERIENCE: STRATEGIES

THEME



Enjoyable Experience

STRATEGIES

- 1 Create an Active Transportation Network that Prioritizes Safety, Accessibility, and Equity
- 2 Create Vibrant Places and Streets
- 3 Maintain the Active Transportation Network Year-Round



EVERYDAY ENCOURAGEMENT: STRATEGIES

THEME



Everyday Encouragement

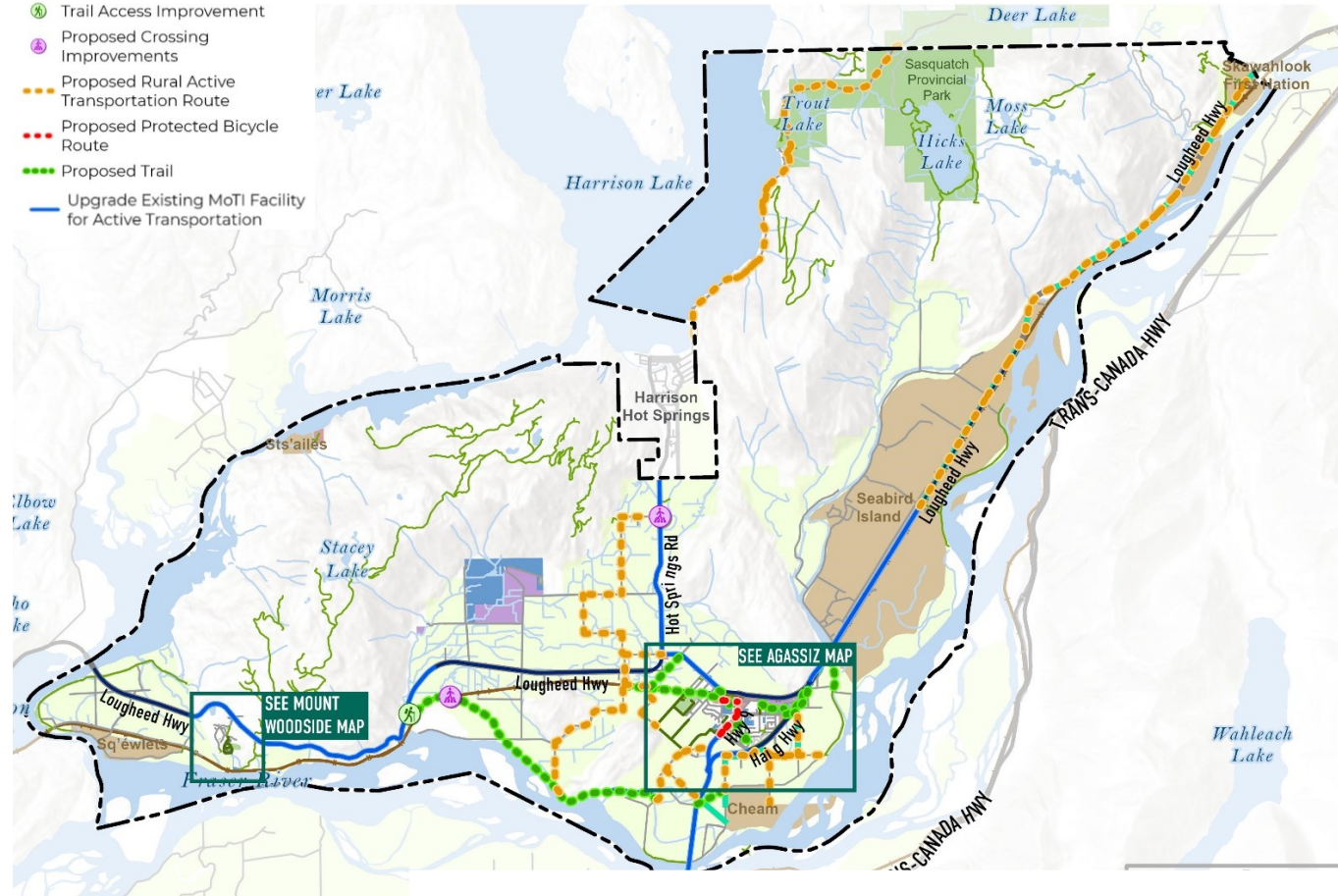
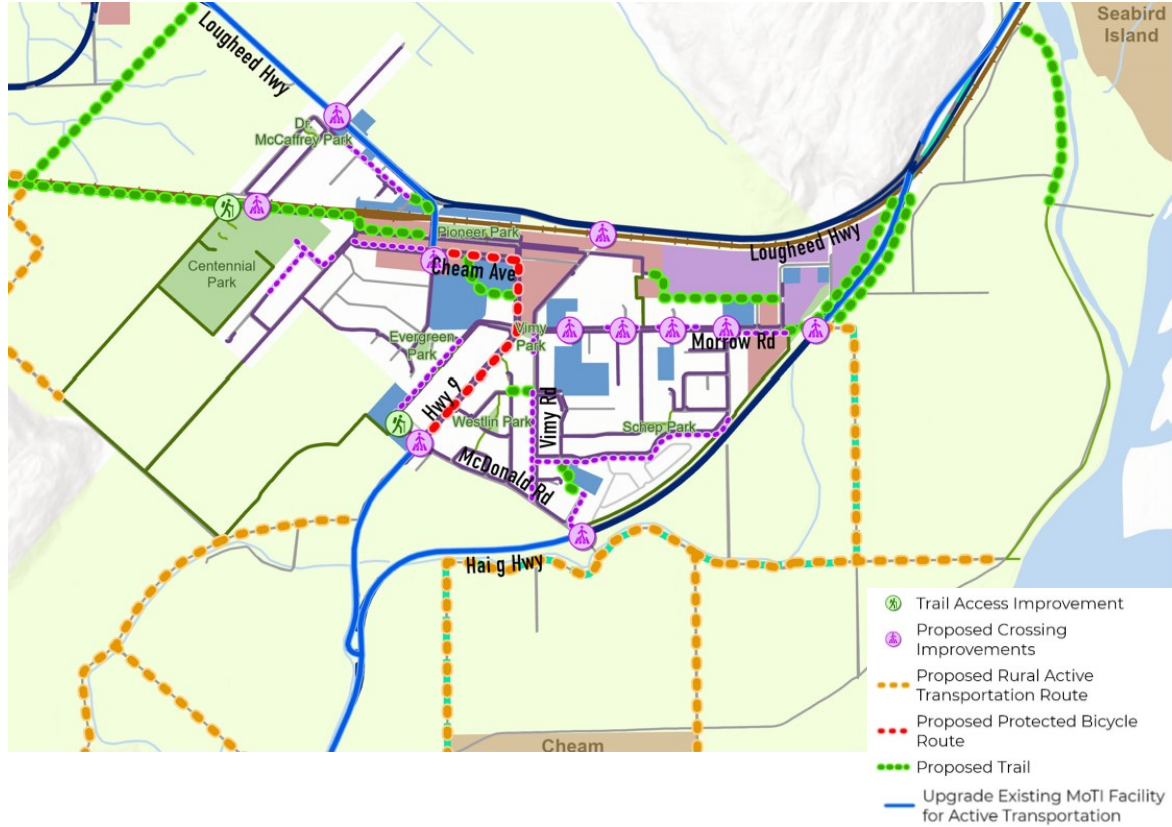
STRATEGIES

- 1 Ensure the Active Transportation Network is Easy to Navigate
- 2 Support Economic Development and Bicycle Tourism
- 3 Make Active Transportation Fun and Easy
- 4 Support and Monitor the Implementation of the Active Transportation Plan



LONG-TERM NETWORK RECOMMENDATIONS

PROPOSED CYCLING AND TRAIL NETWORK



IMPLEMENTATION

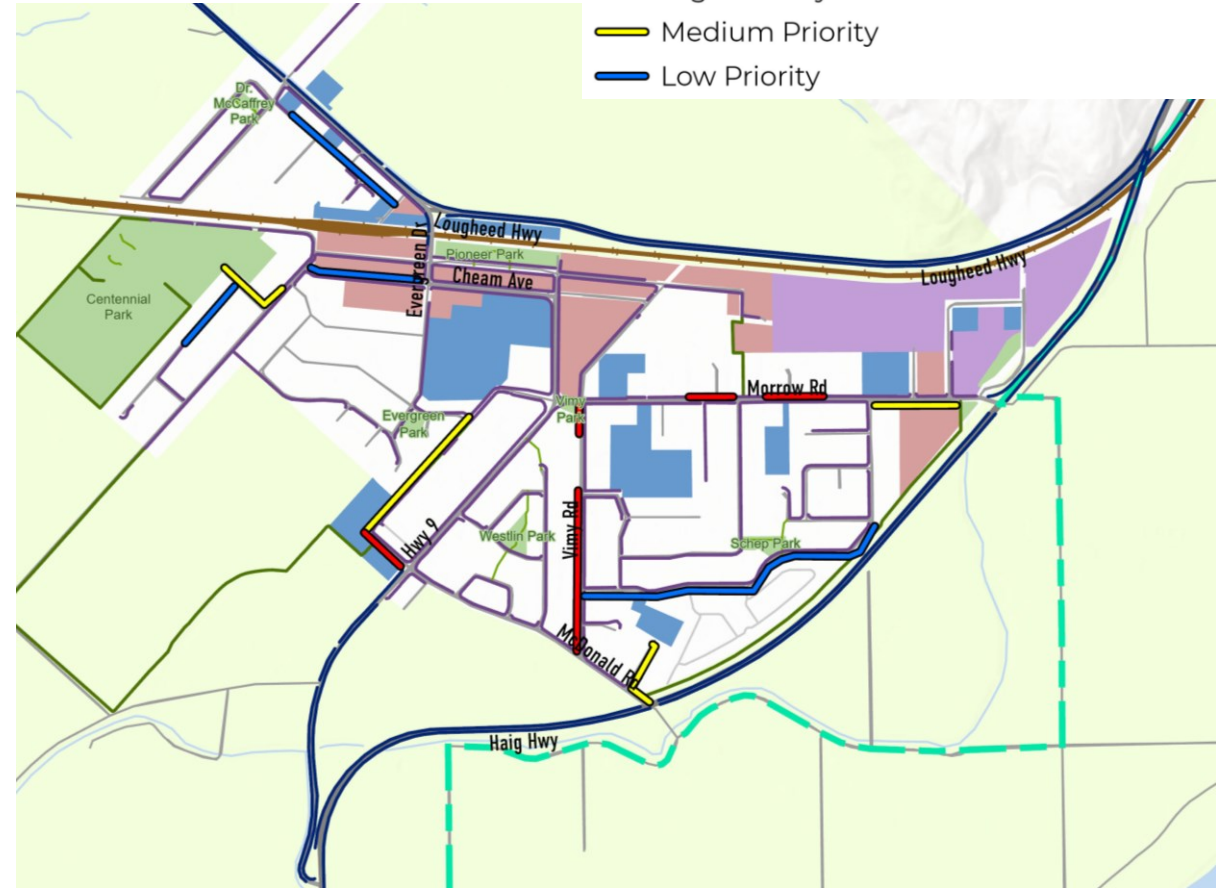
- Priorities were identified based on several factors, including:
 - Fill in gaps in the network and provide continuous facilities.
 - Connecting key destinations, including schools, parks, community facilities, and the commercial areas.
 - Input received through community engagement.
 - Opportunities to implement lower-cost 'quick wins' for rapid implementation.
 - Input from community members and District staff.

IMPLEMENTATION

- The plan establishes a long-term framework, with a primary focus on the highest priority projects.
- Implementing trails, filling in sidewalk gaps, working with MoTI.

PROPOSED SIDEWALK NETWORK BY PRIORITY

- High Priority
- Medium Priority
- Low Priority



THANK YOU!

Council Presentation
February 26, 2024

DISTRICT OF KENT

